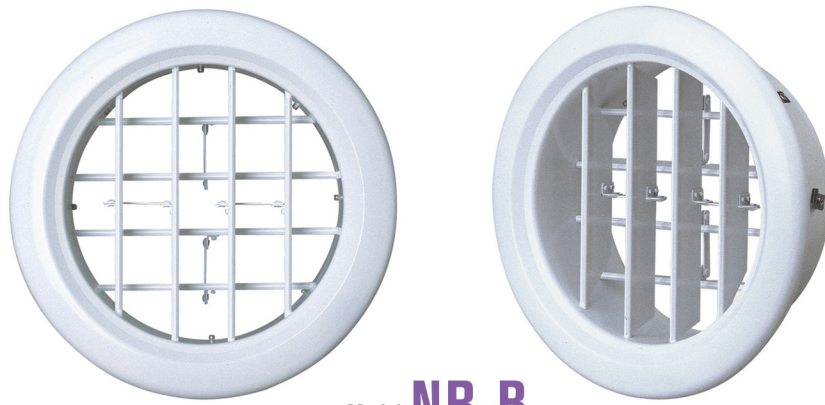


Double Deflection Round Grilles

Model: **NR-B**



Model: **NR-B**

Seiho's model NR-B utilizes a widely-spaced blade design for high capacity, long throw air flow in a double deflection grille. The linked blades facilitate air direction control. The NR-B can be wall mounted securely with its mounting bracket. Excellent for use where high volume air streams are needed such as airport concourses, hotel lobbies, and convention halls.

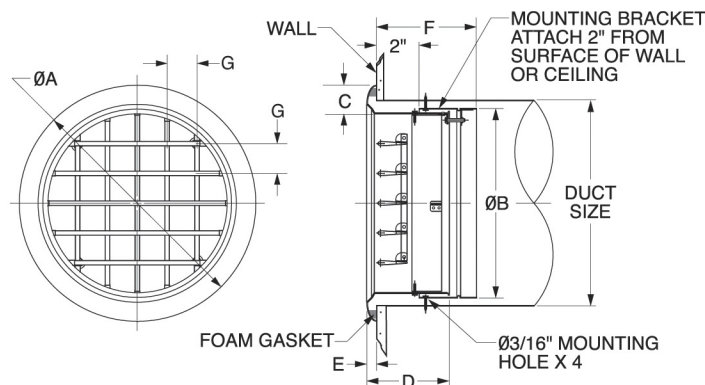
MATERIAL FINISH

- Aluminum
- Gloss White or Mill Finish
- Custom Colors Available

FEATURES

- Contemporary Design
- Concealed Mounting Mechanism
- Wide Dispersion Patterns
- Long Throw Capacity
- Available for Standard Duct Sizes
- Extruded Aluminum Airfoil Blades
- Double Deflection Design
- Heavy Gauge Aluminum Body

MODEL NR-B DIMENSIONS



MODEL	DUCT SIZE	A	B	C	D	E	F	G
NR 6B	6	7 5/8	5 13/16	1 7/32	4 9/32	15/32	5 1/2	1 5/16
NR 8B	8	10	7 25/32	1 13/32	4 9/32	15/32	5 1/2	1 7/16
NR10B	10	12 5/8	9 3/4	1 25/32	4 13/32	19/32	5 1/2	1 7/8
NR12B	12	14 19/32	11 23/32	1 25/32	4 13/32	19/32	5 1/2	1 29/32
NR14B	14	16 9/16	13 11/16	1 25/32	4 13/32	19/32	5 1/2	1 29/32
NR16B	16	18 17/32	15 21/32	1 25/32	4 13/32	19/32	5 1/2	1 29/32
NR20B	20	23 5/8	19 23/32	2 3/8	4 31/32	29/32	6 11/16	1 29/32
NR24B	24	27 9/16	23 11/16	2 3/8	4 31/32	29/32	6 11/16	1 29/32

Product information is subject to change without notice. All dimensions in inches.



Double Deflection Round Grille

Performance Data

Model: **NR-B**



SIZE	Neck Velocity (fpm)		250		500		750		1000		1250		1500	
	Velocity Pressure (in. wg)		0.004		0.016		0.035		0.062		0.097		0.140	
	Total Pressure		0.023	0.029	0.076	0.096	0.165	0.200	0.247	0.292	0.387	0.417	0.540	0.570
	Deflection		0	22.5	0	22.5	0	22.5	0	22.5	0	22.5	0	22.5
6	Neck Area 0.196 sq.ft	CFM	50		100		150		200		250		300	
		NC	-	-	-	-	-	20	24	34	32	40	37	43
		Throw(ft.)	10	9	13	12	17	15	19	17	22	19	24	22
8	Neck Area 0.349 sq.ft	CFM	90		180		270		350		440		530	
		NC	-	-	-	18	22	26	25	32	33	40		
		Throw(ft.)	13	12	18	17	22	20	25	23	27	25	31	28
10	Neck Area 0.545 sq.ft	CFM	140		280		410		550		690		820	
		NC	-	-	-	15	15	21	20	26	26	33		
		Throw(ft.)	16	14	23	20	28	25	31	28	36	32	36	33
12	Neck Area 0.785 sq.ft	CFM	200		400		590		790		990		1180	
		NC	-	-	-	-	16	22	22	32	31	38	35	48
		Throw(ft.)	19	17	27	24	32	30	38	34	41	39	43	41
14	Neck Area 1.069 sq.ft	CFM	270		540		810		1070		1340		1610	
		NC	-	-	-	-	16	29	24	32	29	34	37	45
		Throw(ft.)	22	21	32	28	38	35	44	40	49	44	54	47
16	Neck Area 1.396 sq.ft	CFM	350		700		1050		1400		1750		2100	
		NC	-	-	-	-	19	27	29	34	32	41	37	45
		Throw(ft.)	25	23	36	31	43	39	51	45	56	52	63	55
20	Neck Area 2.182 sq.ft	CFM	550		1100		1640		2190		2730		3280	
		NC	-	-	-	-	19	27	30	34	32	40	38	47
		Throw(ft.)	31	27	44	41	54	49	63	57	70	64	74	71
24	Neck Area 3.142 sq.ft	CFM	790		1580		2360		3150		3930		4720	
		NC	-	-	-	-	20	26	30	34	33	41	39	48
		Throw(ft.)	33	28	54	49	65	58	74	68	83	78	92	84

THE THROW VALUES ARE BASED ON A 50 FPM TERMINAL VELOCITY.
 DASHED LINE IN SP BOX INDICATES STATIC PRESSURE IS LESS THAN 0.01 IN.W.G.
 DASHED LINE IN NC BOX INDICATES NOISE LEVEL IS LESS THAN 20.
 NC LEVEL IS BASED ON 10dB ROOM ATTENUATION(PWL RE:10-12 WATTS) WITH ONE DIFFUSER OPERATING.